



Robotic Process Automation



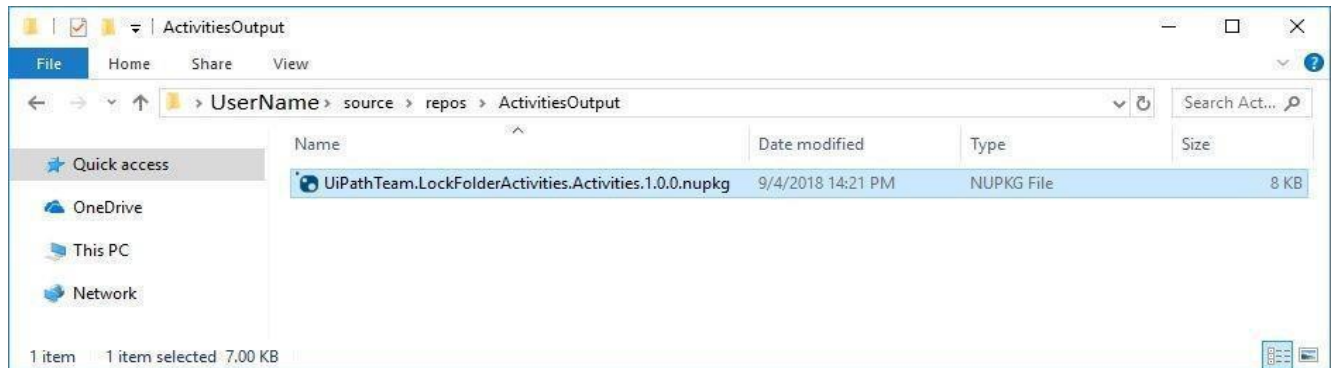
# **CUSTOM ACTIVITIES - Installation Guide**

All Custom Activities published on Go! can now be installed straight from Studio, via Go! public feed (check out this [video tutorial!](#)).

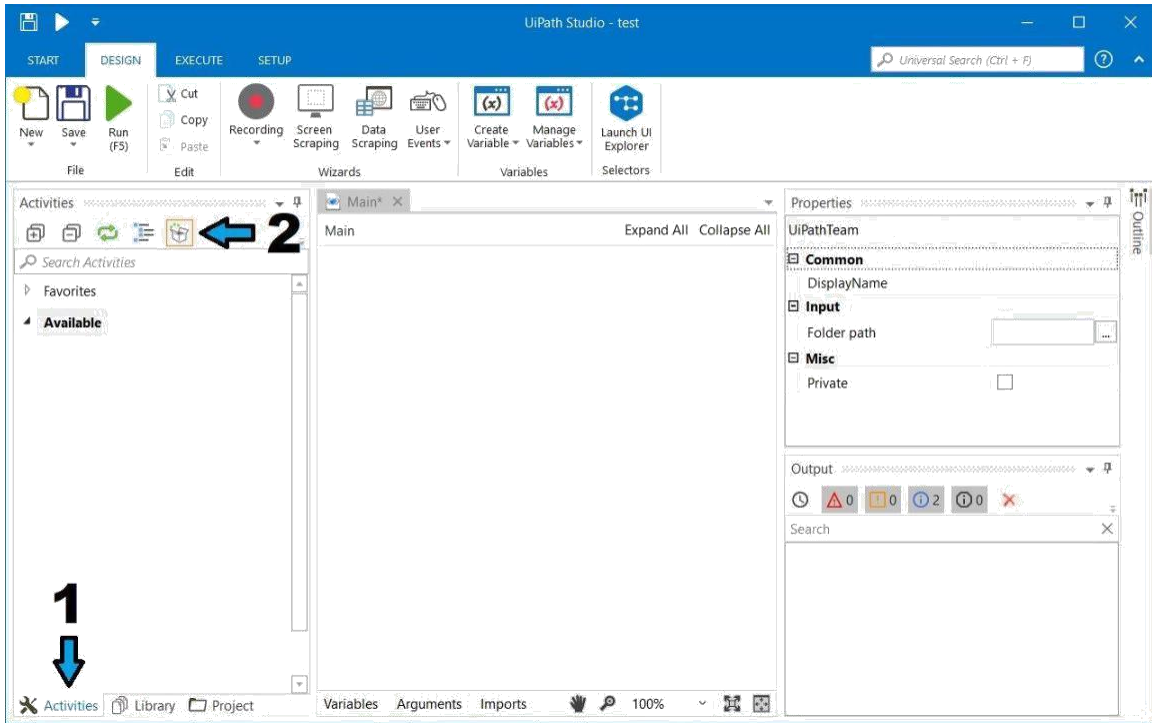
## How to Add a Custom Activity in UiPath Studio (manual installation - all versions supported)

### How to setup your nuget package

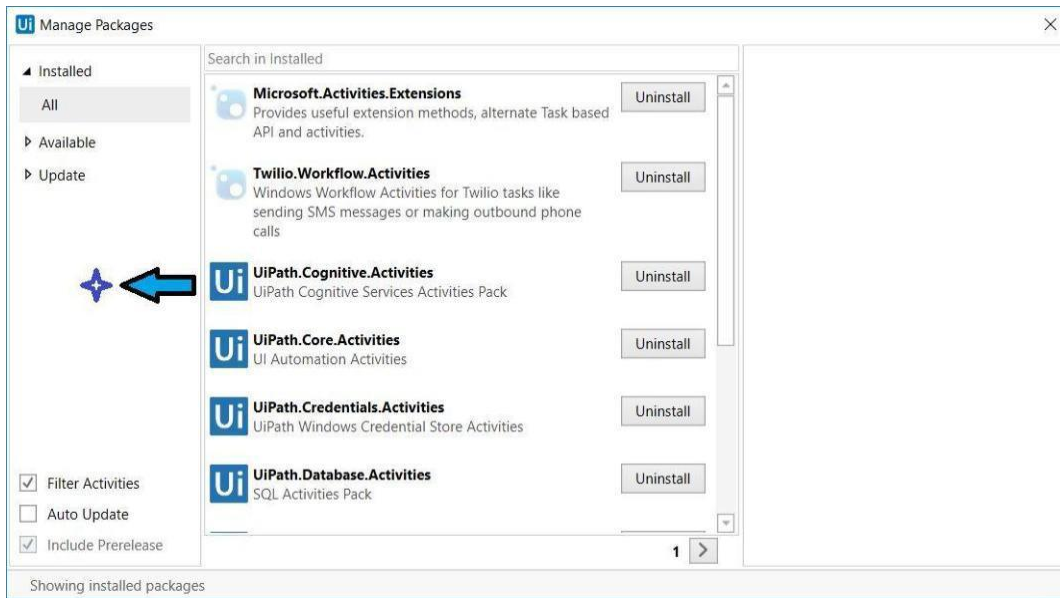
1. Create a folder in which you will place future custom activities, for example “C:\Users\%username%\source\repos\ActivitiesOutput” if you also develop custom activities or “C:\Users\%username%\ActivitiesOutput” if you only use them
2. [Optional: Download component from UiPath Go! To above location]
3. Copy your activity nuGet package (it should be a .nupkg file) into ActivitiesOutput folder




4. Open UiPath Studio, open any project and go to “Activities” (no 1) and afterword click on the package icon (no 2).

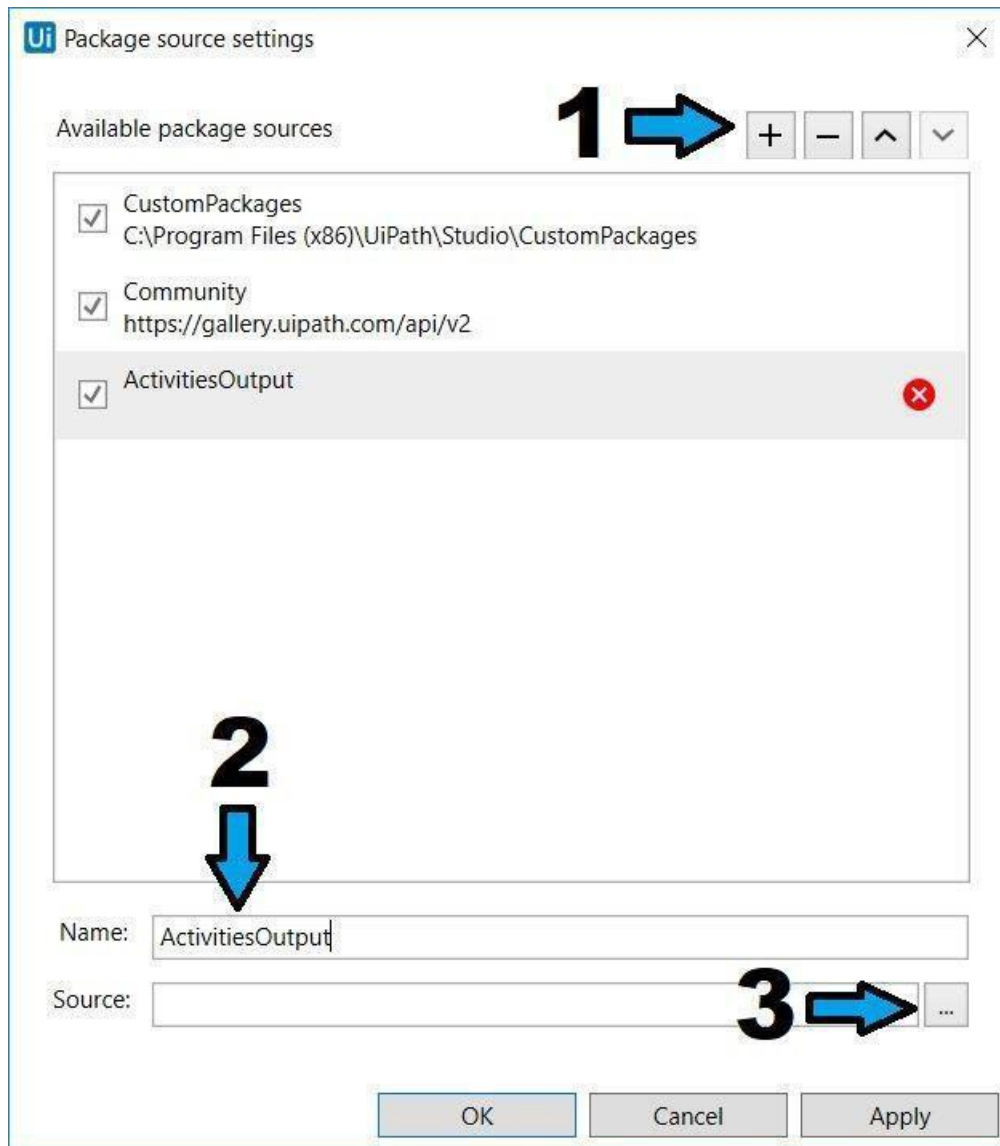


5. In the new window, right-click on the white space from the left menu

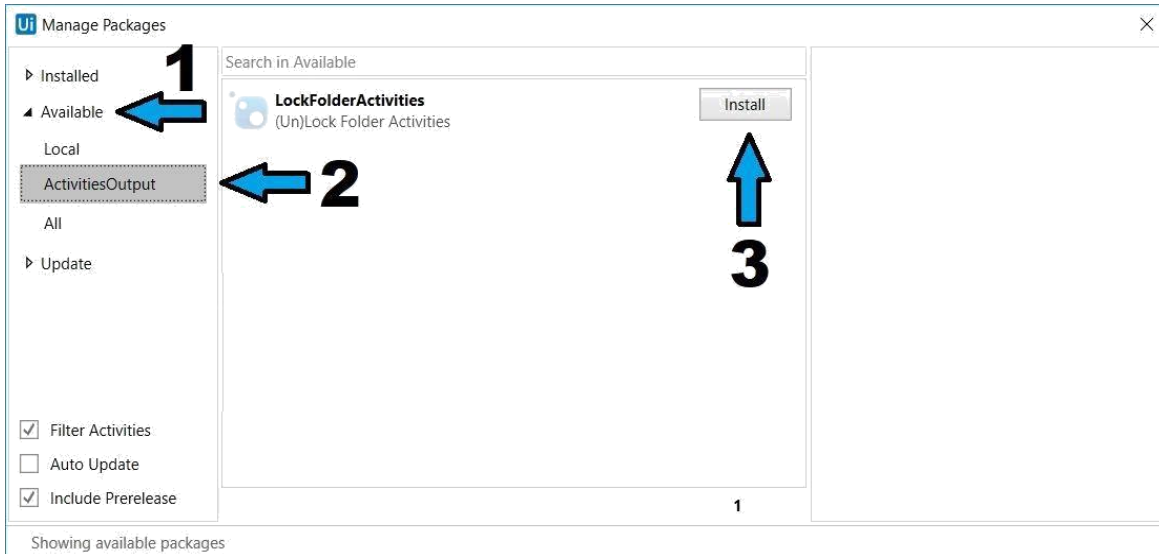


6. Click on the  button that appear

7. A new window will be displayed. Press the “+” button (no 1), write a name in Name text area and browse for the ActivitiesOutput directory created earlier and press OK on “Browse for Folder” window



8. Click on Apply and OK
9. Now go to “Available” node from the left menu and the new option will appear



10. From here you can install the copied package pressing the Install button (no 3)

11. The new installed activity will be shown into the Activities area from Studio and it can be used

